

Last Week In Innovative Mobility

October 21 - 27, 2019



SCOOTER SHARING

Bird rolls out a moped-style electric scooter in Los Angeles. The new moped is in service under the Scoot brand, which Bird acquired in June. The moped is designed for two riders, has a top speed of 20 mph, and is equipped with a helmet. Scoot plans to test pricing of the moped sharing service during its pilot phase.

SHARED AUTOMATED VEHICLES

Chinese startup Pony.ai will launch BotRide, a shared automated vehicle (SAV) service in Irvine, CA. The pilot will begin on November 4th and run through January. BotRide users will book rides through an app developed in collaboration with Via. The service will use a fleet of 10 electric SUVs, and safety drivers will be present in each vehicle.

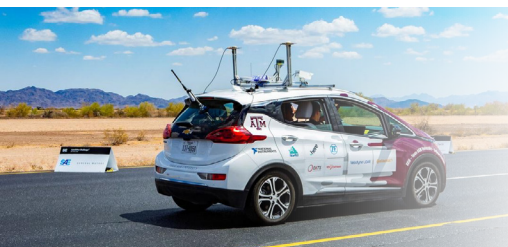


MICROMOBILITY

Swiftmile receives a contract to install micromobility charging stations in Austin, TX. Swiftmile plans to deploy 10 charging stations by the end of 2019. Swiftmile will charge operators by the minute to use stations for charging. The system is intelligent, so riders can park any device at the station, but only the devices of Swiftmile customers will be charged.

CARSHARING

One-way, free-floating carsharing service Penske Dash launches in Washington, D.C. and Arlington, VA. Customers will have access to a fleet of Volkswagen Jetta SE vehicles that can be rented by the minute, hour, or day through an app. The service costs \$0.45 per minute or \$15 an hour and includes fuel, parking, and insurance.



AUTOMATED VEHICLES

The Texas A&M Engineering Experiment Station (TEES) was awarded \$7 million in federal funding to study automated vehicles (AVs) on rural roads. High-definition maps, clear signs, and road markings are often not available for rural roads, making AV use more challenging. The funding will allow researchers at Texas A&M to run tests and collect data on rural roads.

Visit imr.berkeley.edu to sign up for our weekly newsletters!
Follow us on Twitter @InnovMobility

Innovative Mobility Research (IMR) focuses on the future of mobility and is based at the Transportation Sustainability Research Center at the University of California, Berkeley