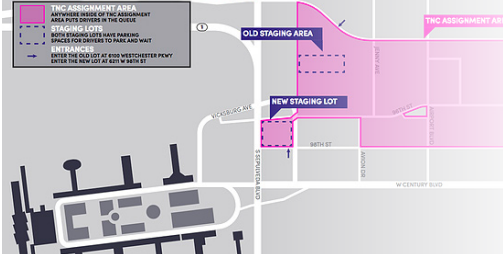


Last Week In Innovative Mobility

September 30 - October 6, 2019



TNCS/RIDESOURCING

Los Angeles International Airport will ban transportation network companies (TNCs) from curbside pickups outside of terminals. Starting on October 29, TNC users will take a shuttle to a parking lot near Terminal 1, where they will be able to book rides. The shuttles will arrive every three to five minutes, and the trip should take no longer than 15 minutes.

DATA SHARING

Waze makes its data sharing program, Waze for Cities Data, available on Google Cloud Platform. Through the program, Waze provides data to cities at no cost. Prior to this, data were only accessible via an API feed provided by Waze, and cities needed to be able to interpret and store the raw data. The data will now be available through a user-friendly dashboard.

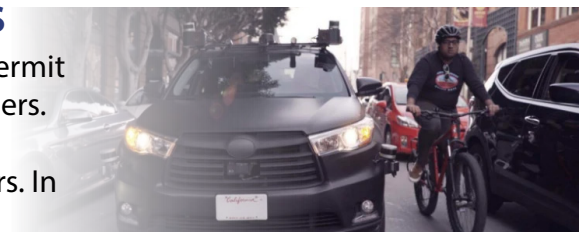


MOBILITY HUBS

Minneapolis launches the city's first "mobility hubs." These are spaces where individuals can access public transit and non-vehicular transportation modes. Each hub includes: a bus stop, a bench, bikesharing and scooter parking, and way-finding signage with travel times to points of interest. During the three-month pilot program, Minneapolis will install 12 hubs.

AUTOMATED VEHICLES

Zoox expands automated vehicle (AV) testing to Las Vegas. Zoox's permit allows it to operate its AVs on Nevada state roads and transport passengers. The company is currently mapping and test driving new routes in the greater Las Vegas region using a fleet of 30 retrofitted Toyota Highlanders. In the future, Zoox plans to launch an AV TNC fleet in Las Vegas.



SCOOTER SHARING

Spin announces data fellowship to advance safe infrastructure projects. Spin will supply select nonprofits with toolkits that include: 1) a speed gun, 2) a time-lapse camera, 3) a bike-ped counter, and 4) access to StreetLight Data and Populus' Software as a Service (SaaS) platforms. The nonprofits will use this toolkit and the data it gathers to support infrastructure project proposals.

Visit imr.berkeley.edu to sign up for our weekly newsletters!
Follow us on Twitter @InnovMobility

Innovative Mobility Research (IMR) focuses on the future of mobility and is based at the Transportation Sustainability Research Center at the University of California, Berkeley

