

Last Week In Innovative Mobility

September 10 - 16, 2017



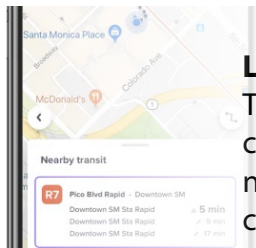
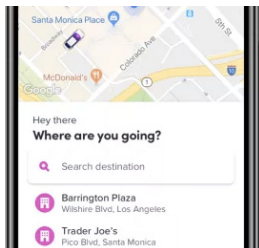
MICROTRANSIT



ViaVan partners with Berlin's transit authority to launch a shared on-demand shuttle service. ViaVan employs Via's dynamic routing technology, which matches passengers to rides depending on their destinations, and Mercedes-Benz vans. The fleet currently includes 50 vehicles. Eighty percent of the shuttles are electric.

RIDESOURCING/TNCs

California passes a statewide bill to regulate ridesourcing company/TNC greenhouse gas emissions. SB 1014 requires state regulators to quantify and set targets for ridesourcing company/TNC emissions. Ridesourcing companies/TNCs must also develop emission reduction plans, including how to incorporate zero-emission vehicles into their fleets.

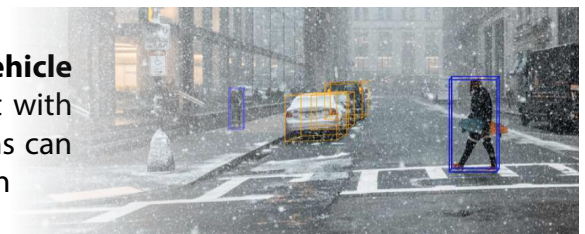


RIDESOURCING/TNCs

Lyft unveils its Nearby Transit app feature in Santa Monica, California. The Lyft app will suggest appropriate public transit routes that passengers can take to get to their destinations. Nearby Transit will also show when the next buses and trains will arrive. Lyft aims to launch this feature in other cities in the future.

AUTOMATED VEHICLES

NuTonomy and Scale release nuScenes, a dataset for automated vehicle (AV) development. NuScenes is an open-source, multi-sensor dataset with millions of images, lidar sweeps, and object detections that AV systems can use. Scale annotated NuTonomy's data with its Sensor Fusion Annotation application program interface.



RIDESOURCING/TNCs

Didi Chuxing will record audio during rides as a passenger safety measure. Passengers and drivers must authorize voice recordings before taking new rides. Didi employees will only be able to access recordings to resolve complaints against drivers. Police with relevant and verified documents will also be able to use the recordings for investigations.

Visit imr.berkeley.edu to sign up for our weekly newsletters!
Follow us on Twitter @InnovMobility

Innovative Mobility Research (IMR) focuses on the future of mobility and is based at the Transportation Sustainability Research Center at the University of California, Berkeley

