

# Last Week In Innovative Mobility

August 6 - 12, 2018

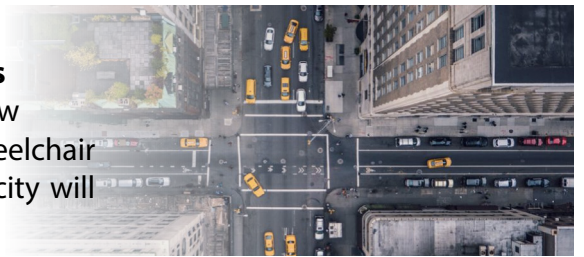


## RIDESOURCING/TNCs

**Didi Chuxing, China's largest ridesourcing company/TNC, will invest \$1 billion in its services unit, Xiaoju Automobile Solutions Co.** The new unit includes car rentals, maintenance, and gas station services. The company is planning its initial public offering, and about 30 million people currently drive for Didi's ridesourcing service.

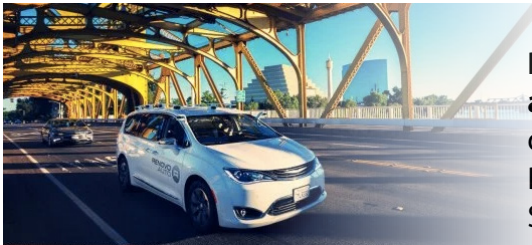
## RIDESOURCING/TNCs

**New York City caps the number of ridesourcing company/TNC vehicles allowed to operate in the city.** The legislation prevents distribution of new licenses to for-hire vehicles for up to one year, unless the vehicles are wheelchair accessible, and sets a minimum wage for drivers. During that time, the city will study ridesourcing companies/TNCs impacts and regulatory options.



## AUTOMATED VEHICLES

**Renovo and Here Technologies partner for automated vehicle (AV) map analytics.** The partners' software platform will support analysis on sensor data from AV fleets. Here Technologies is backed by Audi, BMW, Bosch, and Daimler, among other investors. Products from companies including Samsung, Verizon, and Velodyne use Renovo's operating system, AWARE OS.



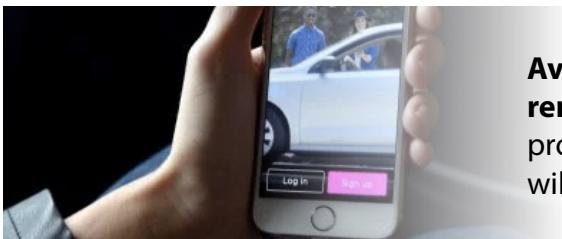
## SCOOTER SHARING

**Lime launches in Madrid, Spain.** Lime and Bird are also operating scooter sharing services in Paris, France, and Bird aims to expand to other markets worldwide. This development follows Lime's dockless bikesharing launch in Europe in December 2017.



## RIDESOURCING/TNCs

**Avis Budget Group, Inc. and Lyft partner to provide on-demand Avis car rentals to Lyft drivers.** Avis will add vehicles to the Lyft Express Drive program, which is operating in select cities across North America. Drivers will be able to reserve a vehicle through the Lyft app.



Visit [imr.berkeley.edu](http://imr.berkeley.edu) to sign up for our weekly newsletters!  
Follow us on Twitter @InnovMobility

Innovative Mobility Research (IMR) focuses on the future of mobility and is based at the Transportation Sustainability Research Center at the University of California, Berkeley

innovative  
mobility