

Last Week In Innovative Mobility

December 25 -31, 2017



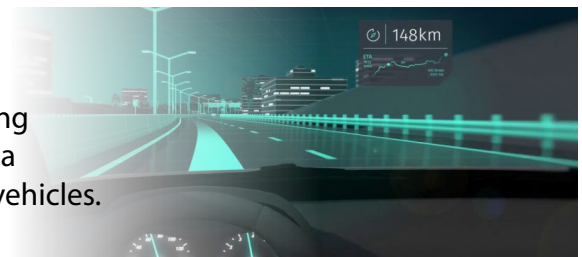
RIDESOURCING/TNCs

SoftBank, a Japanese multinational telecommunications company, acquires 15 percent of Uber. Uber's early investors and employees will receive up to \$33 per share as part of the deal. This development is expected to ease tensions from the company's former leadership and could assist Uber with creating more partnerships in Asia. SoftBank's co-investors also acquired three percent of the ridesourcing company/TNC.



VEHICLES

LG and HERE partner to develop automated vehicle (AV) telematics technology. The product will join HERE's location information and mapping technology with LG's telematics technology. The companies aim to create a solution that supports communication among semi- and fully automated vehicles.



BIKESHARING

Hellobike, a Chinese bikesharing company, raises \$500 million in December 2017. The investments may make the company competitive with industry leaders ofo and Mobike. Hellobike is focusing its operations in 150 smaller Chinese cities, providing service to 88 million registered users at present.

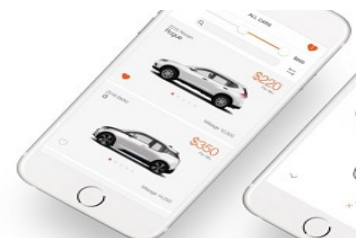


VEHICLES

Uber sells its car leasing program, XChange Leasing, to Fair.com. Fair, a southern California startup, matches customers to cars through an app-based marketplace. Fair makes matches consistent with users' budgets and allows users to return a vehicle with five days notice. XChange Leasing has over 30,000 cars that will be integrated into Fair's platform.

fair

Available on iOS



BIKESHARING

Zoomcar, an AV company, launches bikesharing service PEDL in Palava, Mumbai, India. At launch, 200 bicycles were made available to users in Palava, a privately-developed smart city. Zoomcar aims to expand its operations across Mumbai.



Visit imr.berkeley.edu to sign up for our weekly newsletters!
Follow us on Twitter @InnovMobility

Innovative Mobility Research (IMR) focuses on the future of mobility and is based at the Transportation Sustainability Research Center at the University of California, Berkeley

innovative
mobility