

# Last Week In Innovative Mobility

December 18 -24, 2017



## RIDESOURCING/TNCs

**The European Court of Justice rules that Uber is a transport services company.** As a result, Uber will face stricter regulations and licensing within the European Union. When Barcelona taxi drivers challenged the company, Uber argued that it was a computer services company. However, the court ruled that since Uber's app connects passengers to drivers directly, it must be classified as a transport service.



## VEHICLES

**Waymo and Trov, an insurance startup, partner to provide passenger insurance for Waymo's automated ridesourcing service.** Trov will insure passenger property that is lost and/or damaged in Waymo's automated vehicles (AVs). Trov will also cover any medical expenses resulting from riding in the AVs.



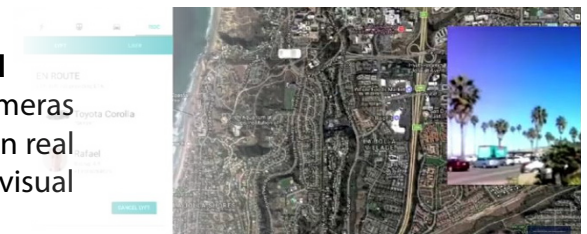
## CARSHARING

**Toyota Motor Thailand launches its Ha:mō carsharing service in Bangkok, Thailand.** The fleet of ten compact electric Toyota Coms will operate on the Chulalongkorn University campus. The electric vehicles (EVs) drive at a maximum of 60 kilometers per hour, have a range of 50 kilometers, and take six hours to charge fully.



## RIDESOURCING/TNCs

**Lyft partners with Aira to increase accessibility for visually impaired passengers.** Aira provides glasses equipped with microphones and cameras to its users, allowing certified agents to see an Aira user's environment in real time. The agents can then assist Aira users with tasks that depend on visual ability, including requesting and finding a Lyft ride.



## RIDESOURCING/TNCs

**Didi Chuxing, China's largest ridesourcing company/TNC, raises \$4 billion in its most recent funding round.** According to Didi, it will use the funding to invest in artificial intelligence technology, further expand its operations abroad, and launch new business initiatives. Didi's investors include Apple and Alibaba.



Visit [imr.berkeley.edu](http://imr.berkeley.edu) to sign up for our weekly newsletters!  
Follow us on Twitter @InnovMobility

Innovative Mobility Research (IMR) focuses on the future of mobility and is based at the Transportation Sustainability Research Center at the University of California, Berkeley