

LAST WEEK IN INNOVATIVE MOBILITY

November 9th - November 15th, 2015

CARSHARING

Chinese automaker Kandi Technologies Group signs a "manifesto" agreement for their Car-Share 4.0 program, which aims to create a connected EV ecosystem powered by big data and cloud computing, wireless charging technology, and carsharing expertise provided by Alibaba, ZTE, and Uber China, respectively.



BIKESHARING

Santa Monica, CA launches the Breeze Bikeshare program, with 500 bicycles available for rent at kiosks throughout the city and neighboring Venice. With yearly, monthly, and pay-as-you-go membership, users can locate and reserve a bicycle using the Social Bicycles app, available for iPhone and Android.



APPS

Google announces new offline features for Google Maps, including location search, turn-by-turn directions, and POI information. Users must download maps for specific areas to enable offline capability when they lose service in those areas. The Android upgrade was released on November 10 and an iOS update will come later this year.



RIDESOURCING/TNCS

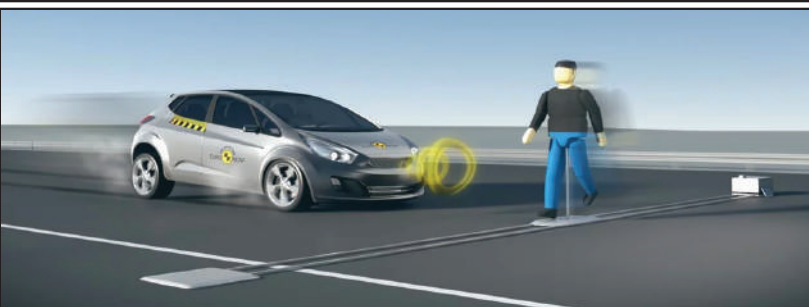
Uber announces a multi-year deal with the Dutch navigation company TomTom, adding to the list of data sources contributing to the Uber driver app.

Uber recently acquired part of Microsoft Bing's assets, including 100 engineers and its 3D street-view mapping technology.



VEHICLES

Euro NCAP introduces a new test for the effectiveness of automated pedestrian detection and collision avoidance systems which will factor into its safety ratings next year. The tests simulate common urban scenarios, including the unexpected emergence of both adult and child pedestrians into the path of an oncoming vehicle.



Visit imr.berkeley.edu to sign up for our weekly newsletters!
Follow us on Twitter @InnovMobility

Innovative Mobility Research (IMR) is based at the Transportation Sustainability Research Center (TSRC) at the University of California, Berkeley

